

1, 2 & 3
BED
APARTMENTS



The Living Fascination...

A Project of

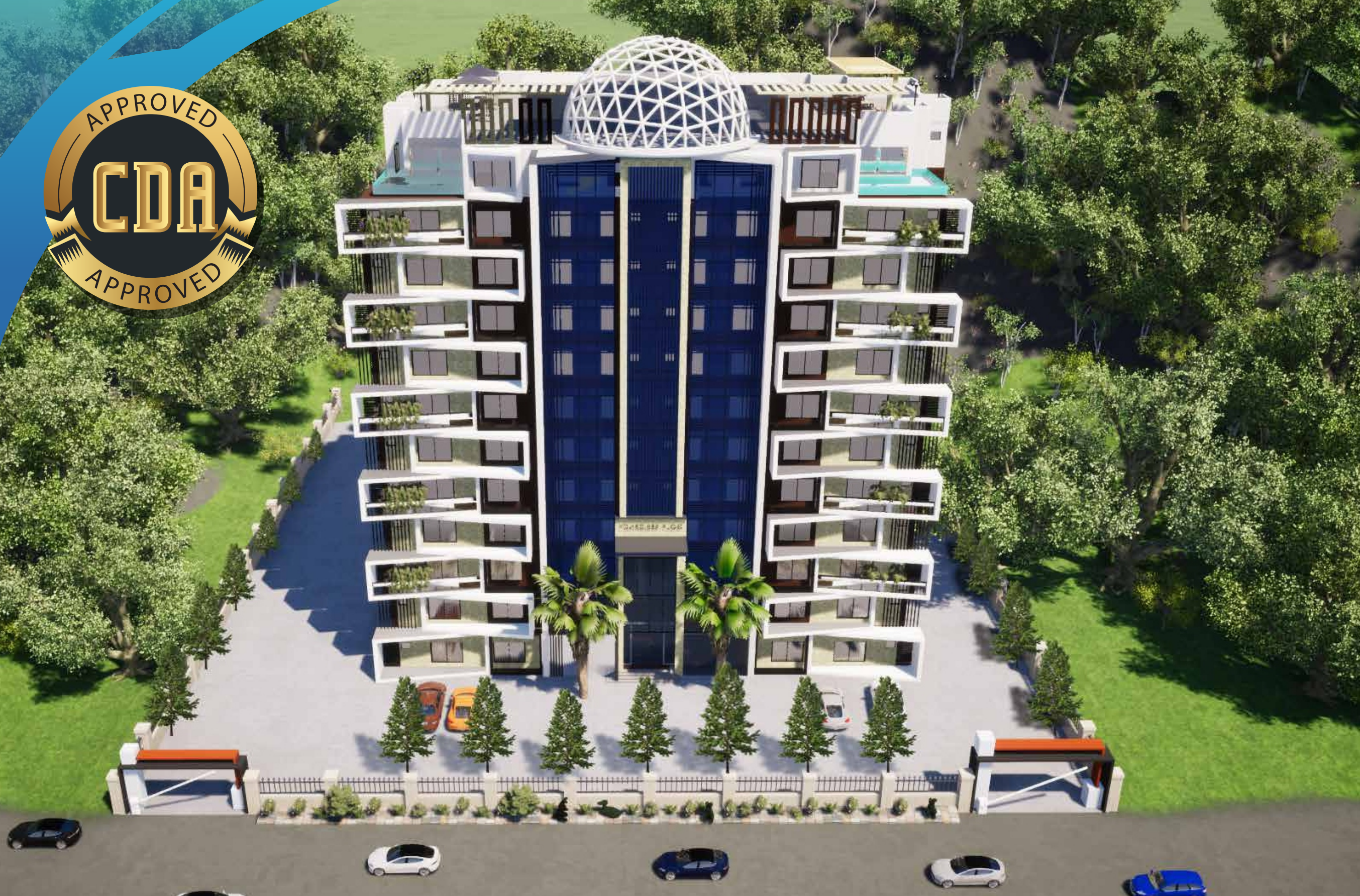
Approved By



Plot 7, Garden City Golf Course
BAHRIA TOWN PHASE 7, ISLAMABAD



UAN: +92 33 111 11078



The Living Fascination...

THE PROJECT GLIMPSE

Golf Residency Apartments is a high-rise project nestled in the beautiful environment of Golf Course and its surrounding area blessed with natural beauty. It's an ideal location for those who aspire for the quiet environs and peaceful lifestyle.

The project is nestled in a prime section of Garden City Islamabad complemented by scores of recreational and health-promoting options foremost of them being the stupendous view of Golf Course and the inspiring and refreshing fresh breeze of clean air revitalizing your spirit.

Facing 9 - hole USGA standard golf course, in close proximity to Zoo & Bird Sanctuary, Turkish style grand masjid, world-class shopping malls, marquee, renowned educational institutes, the majestic look of Golf Residency Apartments would dazzle your eyes at a glance.

Actual View of Golf Course



The Living Fascination...

1, 2 & 3
BED
APARTMENTS



ENVIABLE LOCATION

Golf Residency Apartments commands an exclusively rich location that rivals the best residential sites in town. Being placed in a lush green environment free from pollution, congestion and clutter of trac, Golf Residency Apartments is an ideal abode to live in supreme peace and luxury.

Golf Residency Apartments enjoys the neighbourhood of Golf Course, Zoo, Rubaish Marquee, world-class shopping malls, renowned educational institutes and rst-rate medical centers, etc.





GUEST RECEPTION

The Living Fascination...

AMENITIES AT A GLANCE



Scientifically Designed
NATURAL VENTILATION



**Garbage
Shoot
System**



24/7 Fool Proof
SECURITY



Green & Aqua-based
ENVIRONMENT



HIGH SPEED INTERNET
Telephony & TV connections



Full-time
OPERATIONAL LIFTS



**CENTRAL RECEPTION
SYSTEM** to meet and
greet guests



SENSOR based
HEATING and
COOLING SYSTEM



RoofTop
GYM



RoofTop
SWIMMING POOL



Laundry





RISE TO BE FITNESS WISE

The Living Fascination...

SWIM CLOSER TO THE BLUE SKY



A modern interior scene featuring a light blue armchair with a white cushion, a low wooden console, and a tall metal shelving unit. The background is a dark blue wall with two copper pendant lights. A large blue abstract shape is on the left side of the image.

HEATING & COOLING SYSTEM IN LUXURIOUS APARTMENTS ON THE EDGE OF GOLF COURSE

The Living Fascination...

LUXURIES OF GOLF RESIDENCY APARTMENTS



Firefighting System



Car parking

For residents, guests & visitors. After delivery of apartments, services shall be maintained in a professional manner to ensure continued exciting living for residents.



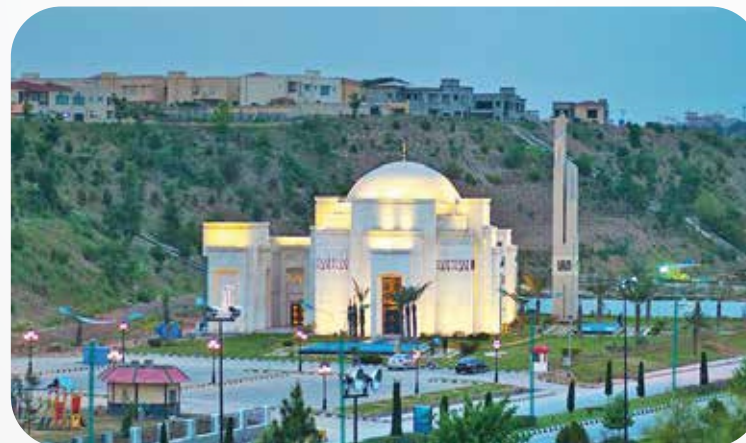


The Living Fascination...



AMENITIES AROUND GOLF RESIDENCY APARTMENTS

- » Close to nature-lush green environment
- » USGA standard 9 hole
- » Golf course & club house
- » Grand Turkish style beautiful masjid
- » Zoo & bird house
- » International standard shopping mall
- » Gold class cinema
- » Highly secured environment
- » Marquee for weddings and other ceremonies



Nearby shopping facilities include
GIGA MALL (CARREFOUR), AMAZON MALL, AQUATIC MALL, ICE MALL,
THE ADDRESS, D-MALL, BAHRIA PARADISE, GREEN VALLEY & MANY MORE

Pakistan's Best Educational Institutes & High Quality Medical Facilities

REMOTE HOME CONTROL

ONLINE HOME AUTOMATION

-  CLIMATE
-  LIGHTING
-  SECURITY
-  ENTERTAINMENT



ECO MODE

NORMAL

OFF

GOLF RESIDENCY

KEYLESS ACCESS TO HOME

SMART APARTMENT CONTAINING:



Key Less Entry



Touch System
Electric Switches



Sensor-based Lighting



Energy Efficiency





The Living Fascination...

HOME MONITORING FROM ANYWHERE

DIGITAL APP OVER MOBILE PHONE OFFERING



OFF location & ON
location remote control of
Electrical Appliances



Video monitoring of
Apartment



The Living Fascination...

Housing and construction industry has witnessed a tremendous change during the recent years although the process of development in housing continues from times immemorial. In fact, shelter is amongst the basic necessities of life. People in primitive societies were constrained to live in houses made of mud and clay that were often exposed to hostilities of weather.

With the advent of science and technology, the change in the domain of housing became conspicuous and the present-day palatial buildings made of cement, concrete and steel are not only free from hazards but also smart, enthusing and captivating to look at.



The Living Fascination...



Since, there's no ebb to the tide of change, we are living today in a much more sophisticated era of construction engineering and technology that can be termed as 'Smart Tameer'.

Keeping oneself abreast of the change is the essential ingredient of success in any walk of life. Through painstaking efforts of continuous improvement, Smart Tameer (Pvt) Ltd strives to remain abreast of the latest, environmentally friendly developments in the construction world.

Smart Tameer (Pvt) Ltd is backed by a dedicated team of professionals brimming with hands-on experience and imaginative ideas, never compromising on anything less than the best.

Today, nothing makes us so distinct as does our inimitable style in being selective and innovative.



1, 2 & 3
BED
APARTMENTS



GOLF RESIDENCY APARTMENTS

The Living Fascination...

For more details and booking

UAN: +92 33 111 11 078

+92 33 111 11 078
+92 30 050 15 404
www.golfresidency.com

📍 **Site Address:**
PLOT 7, GARDEN CITY GOLF COURSE
BAHRIA TOWN PHASE 7, ISLAMABAD

📍 **Sale Office:**
PLOT # 12, GARDEN CITY GOLF COURSE,
BAHRIA TOWN PHASE 7, ISLAMABAD

📍 **Head Office:**
Zaman Plaza, Plot # 6, Hospital Boulevard,
Sector A, **Defence Housing Authority Phase 2**
Near Gate 2, G.T. Road, Islamabad